

# DMS

TWO

LUXURY LIVING









DMS  
TWO





Dubai is located on the Eastern coast of the Arabian Peninsula, in the south west corner of the Arabian Gulf.

It is extremely well known for its warm hospitality and rich cultural heritage, intriguing deserts, beautiful beaches, luxurious hotels and shopping malls, fascinating heritage attractions and a thriving business community, Dubai receives millions of leisure and business visitors each year from around the world.



## CITY OF DREAMS

Dubai, no doubt is a city of dreams. Due to its high infrastructure and things happening quickly, Dubai is one of the fastest working cities which demands attention.



# DMS TWO

DMS TWO is located in one of the fastest-growing communities in Dubai surrounded by two main roads Al Khail Road and Sheikh Mohammed Bin Zayed Road. DMS Two offer 4 One Bedroom 20Two bedroom and 2 three bedroom suites, community, terraces or Burj Al Khalifa view.

The development provides an equipped gymnasium, pool, 24 hour reception and offers 26 modern apartments. DMS Two with modern designs, innovative and pleasurable place to live, it is the perfect choice for both families and investors.



MODERN STYLE BUILDING



HIGH-END CERAMIC TILES



RECEPTION 24-7



BUILT-IN WARDROBES



BUILDING SECURITY



GROUND FLOOR PARKING





# DUBAI

meydan



CLINICS & PHARMACIES



SHOPPING MALL



NURSERIES AND SCHOOL



HOTELS



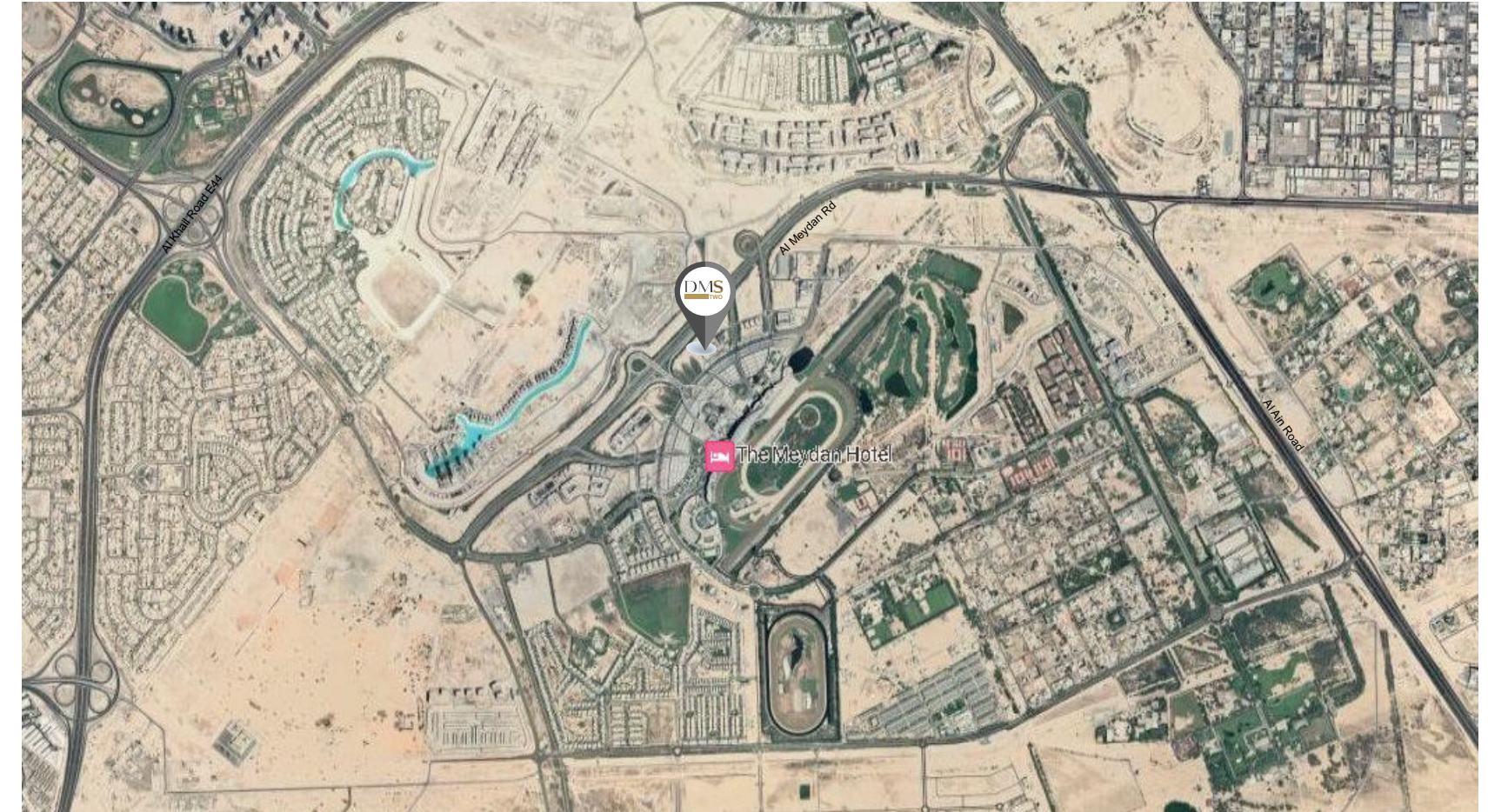
COMMUNITY PARKS



PUBLIC TRANSPORTATIONS

Al meydan is the visionary concept of His Highness Sheikh Mohammed Bin Rashid Al Maktoum UAE Voice President, Prime Minister and Ruler of Dubai. This is family friendly development designed to provide a sense of community and a exceptional array of amenities and services, it offers residents everything needed to live life to the full.

Al Meydan provides a beautiful, self-contained environment for residents, with all the modern facilities of a city. Designed to cater for the whole family, Al Meydan featuressports fields, schools and mosques clustered throughout the abundant green parks of the development.



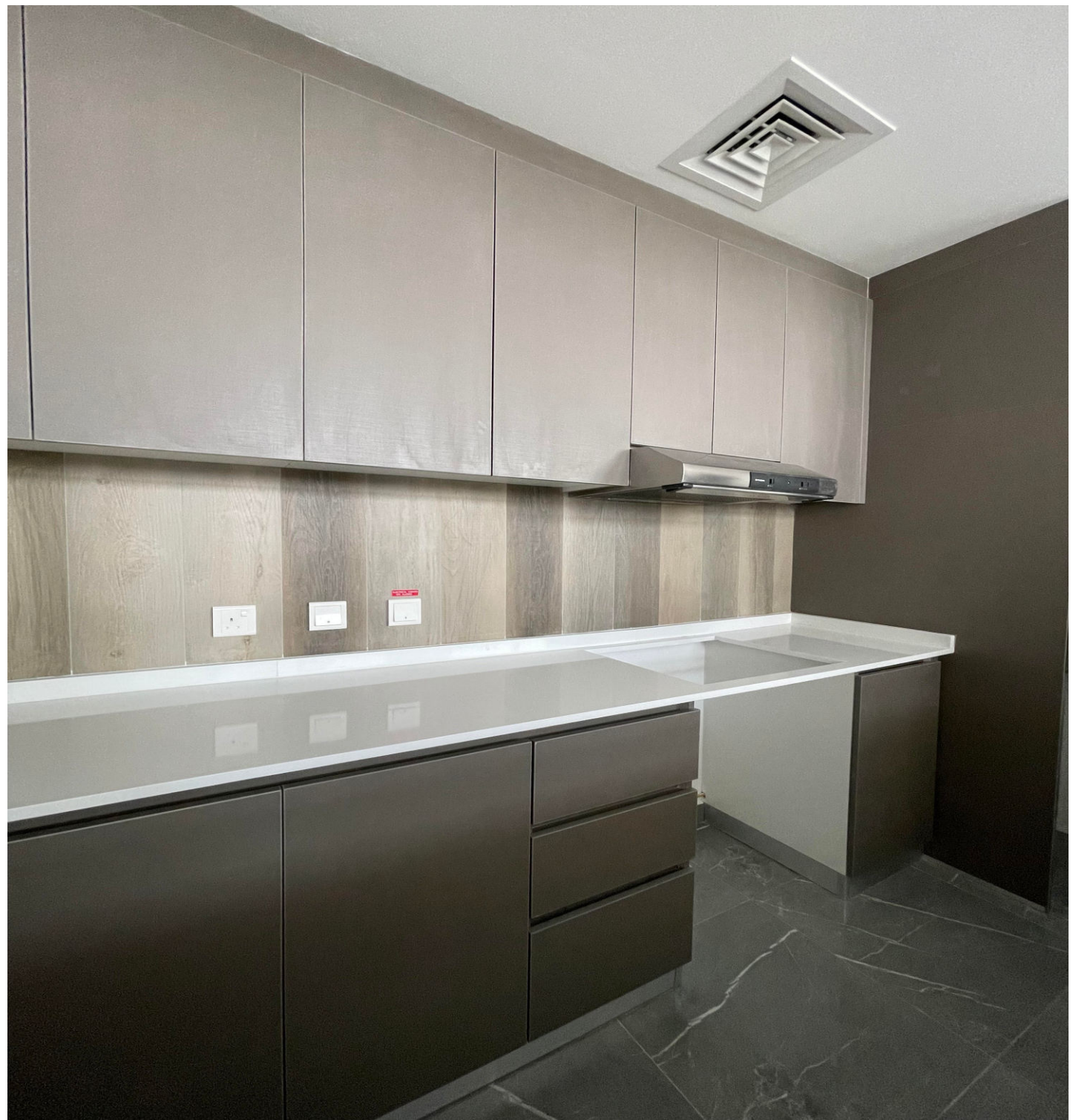
















Fitness Gym



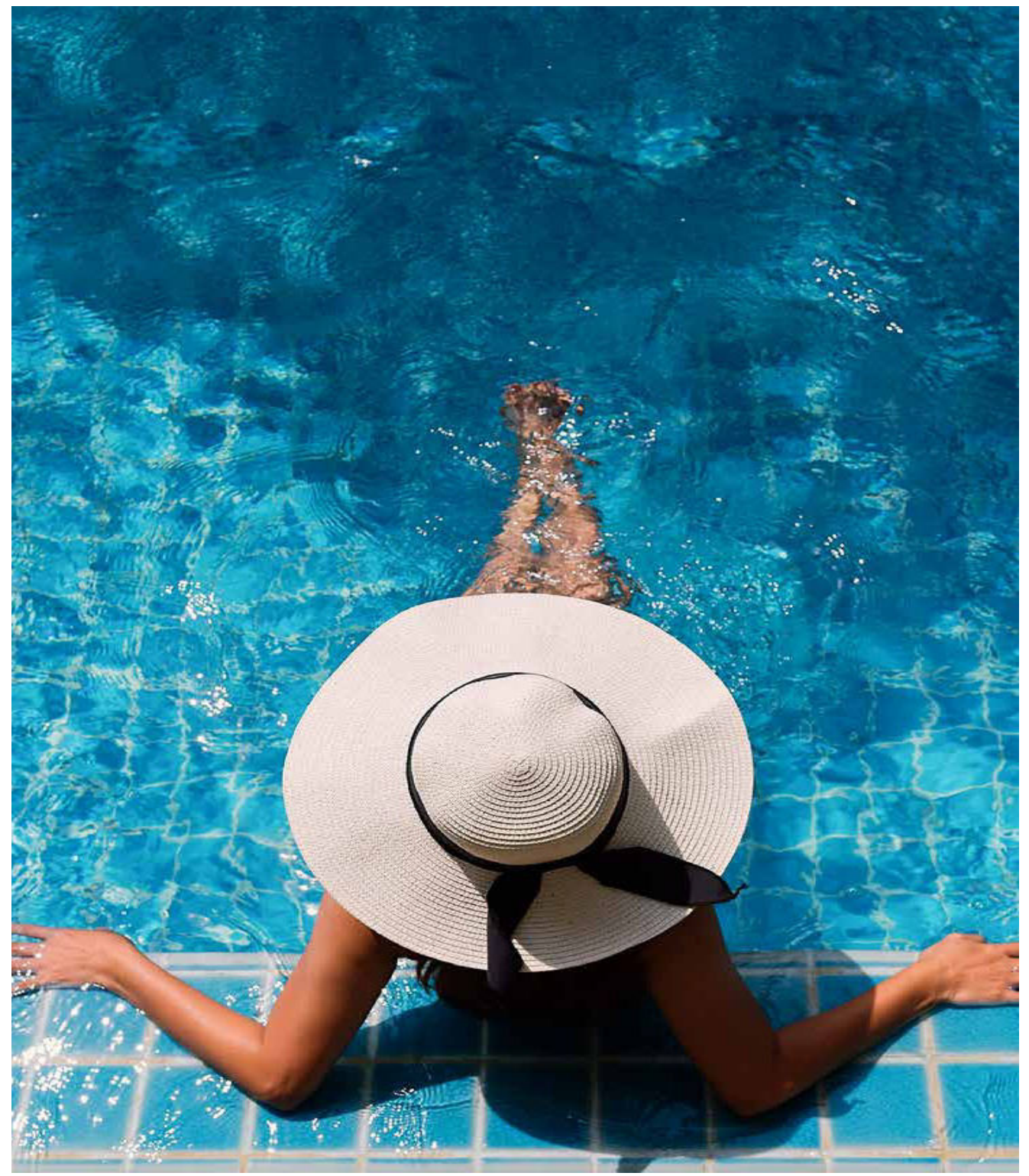
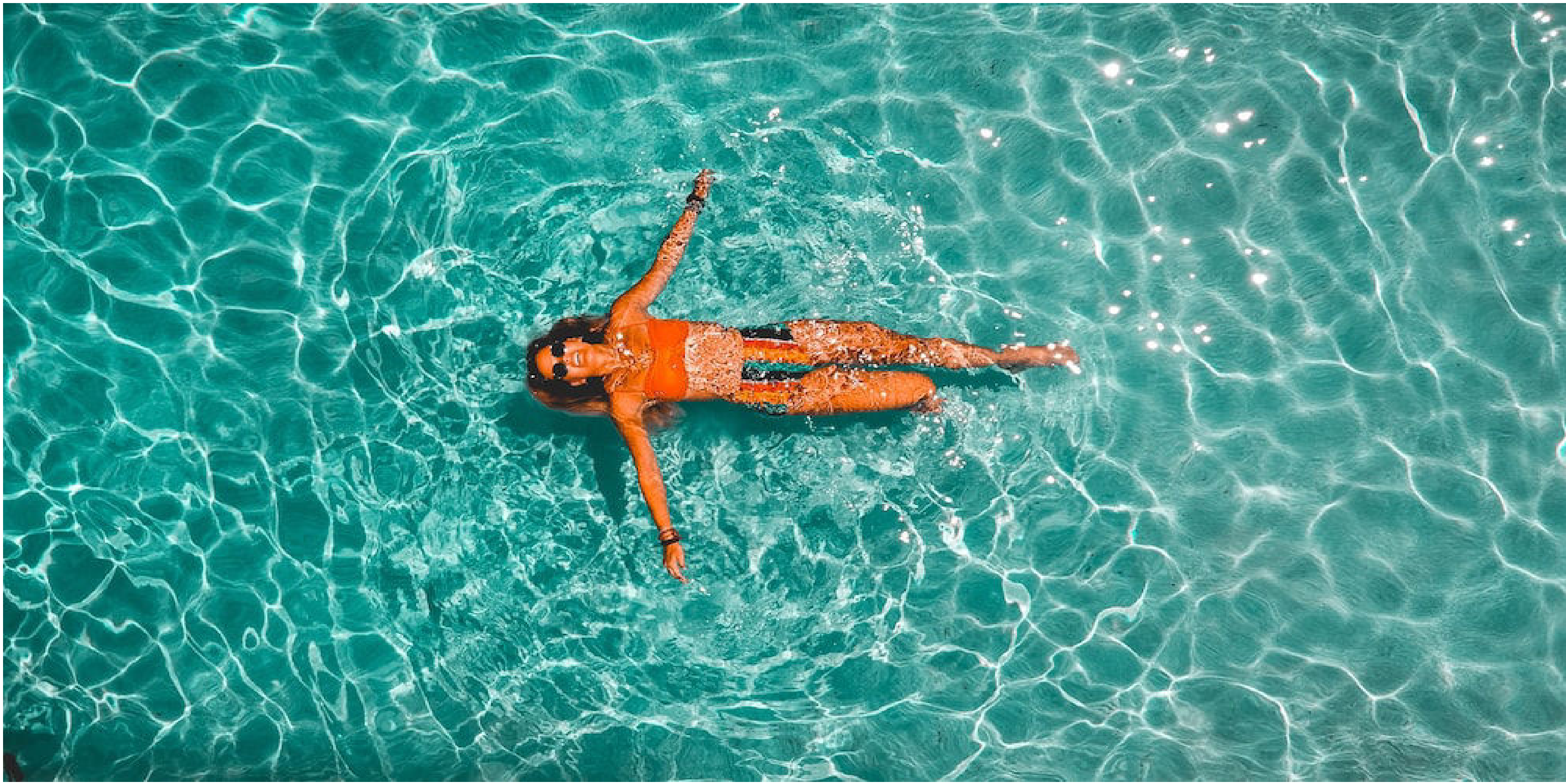


## Live in the New Realm Of Luxury

Discover the true meaning of luxury living with  
artfully crafted amenities designed to ensure  
exceptional quality and experience like never before









ONE BEDROOM  
LAYOUT

Our Architects has designed all the layout keeping in consideration the habitability and the quality of the material used.



TOTAL ONE BEDROOM : 06

SIZE FROM 79.24 SQM TO 79.39 SQM

UNITS: 104 - 105 - 204 - 205 - 304 - 305

TWO BEDROOM  
LAYOUT

Our Architects has designed all the layout keeping in consideration the habitability and the quality of the material used.



TOTAL TWO BEDROOM : 18

SIZE FROM 108.36 SQM TO 133.00 SQM

UNITS: 101 - 102 - 103 - 106 - 107 - 108

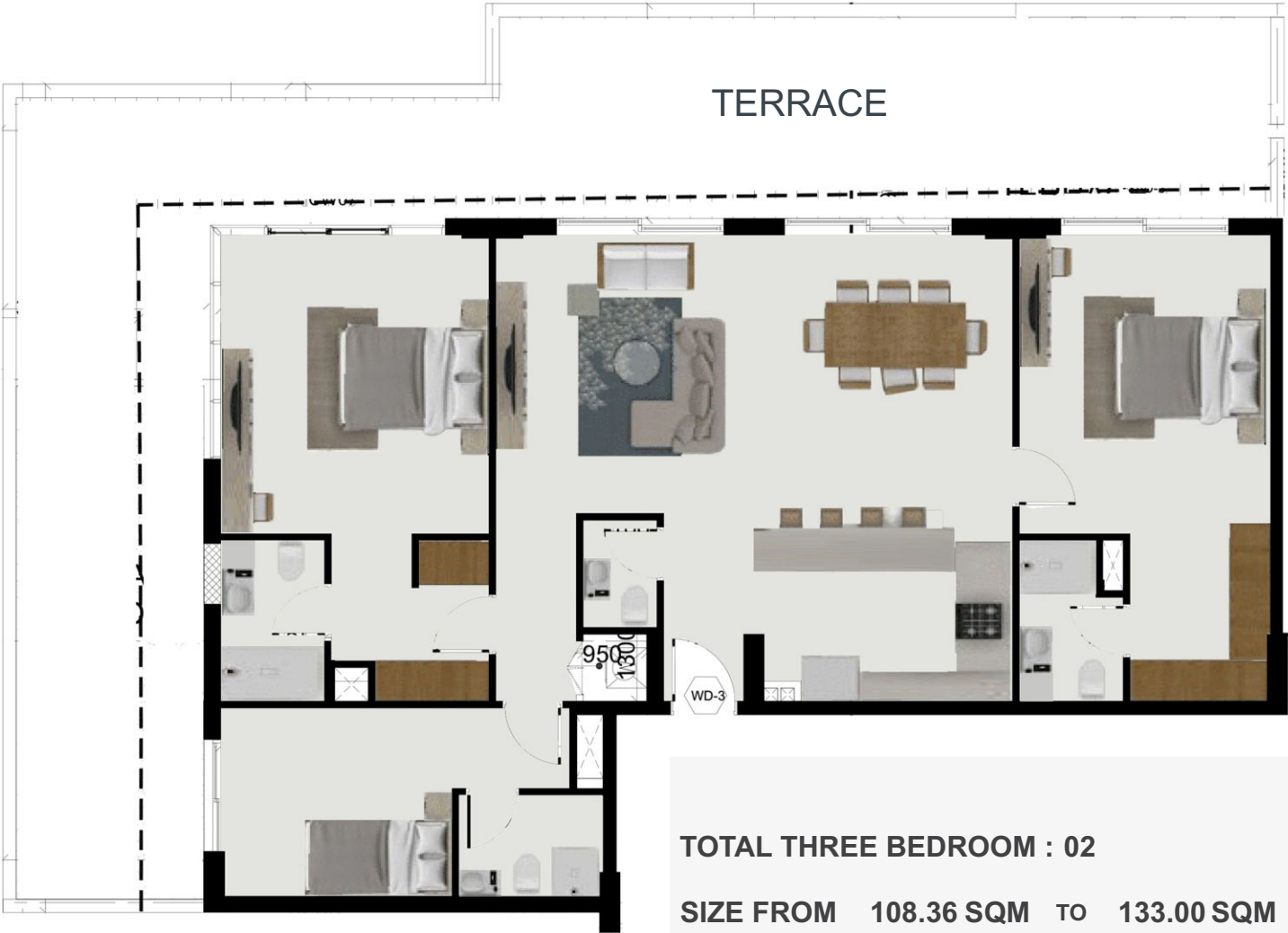
201 - 202 - 203 - 206 - 207 - 208

301 - 302 - 303 - 306 - 307 - 308



THREE BEDROOM  
LAYOUT

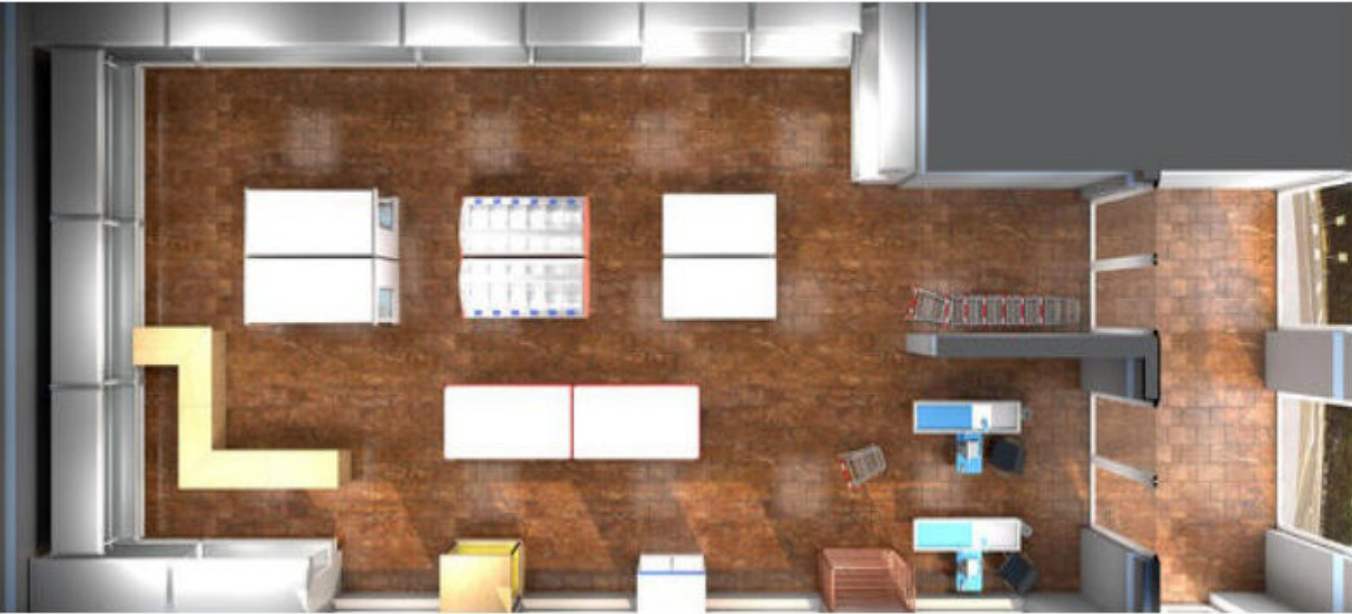
Our Architects has designed all the layout keeping in consideration the habitability and the quality of the material used.



TOTAL THREE BEDROOM : 02  
SIZE FROM 108.36 SQM TO 133.00 SQM  
UNITS: 401 - 402

SHOP  
LAYOUT

Our Architects has designed all the layout keeping in consideration the habitability and the quality of the material used.



SHOP : 01  
SIZE : 102.87 SQM



# BUILDING MATERIAL

Building internal and external paint by Jotun

Reception floor and wall with RAK Ceramic  
Elevators by KONE

Units floor and bathroom by RAK Ceramic

Doors luxury wooden wall nut by Lootha

Bedroom Closets by Lootha carpentry

Glass double glazing and thermal

Sanitary ware from Germany by Kohler

Lighting by Philips

Electrical Switches by MK (UK)

Water heater by Ariston (Italy)

Air conditions by DAIKIN

High Brand Gym Equipment



شركة مجموعة النخلات الثلاث للتجارة المحدودة  
Three Palm Trees Trading Group .Ltd



DISCLAIMER: The information and data contained in this brochure has been prepared by DMS Two solely as a guide and for information purposes and does not constitute advice or any agreement. The unit floor plans, layouts, specifications, furniture and other information contained in this brochure has been prepared for illustrative and information purposes only and no representation or warranty (express or indirect) is made as to the accuracy of any statements, plans, layouts, diagrams, schematics and finishing's of any part of the DMS Two development. Any use of the content of this material or proprietary content including the reproduction, modification, distribution, transmission, republication or display of the contents in whole or in parts is strictly prohibited without the express written consent of DMS Two.







# DMS

TWO



+971 4 584 6914



[info@tptdubai.com](mailto:info@tptdubai.com)